

TELLERSCAN® TS215

Quiet and Reliable Remote Deposit Check Scanner

TS215 FEATURES

- Low Cost Design
- Quiet Operation
- Renowned Reliability
- Slide-In Style Manual Feeder
- Front and Back Color Cameras
- Space Saving Design
- Endorse Before Scanning For Check 21
- Industry Leading Image Quality For Highest CAR, IQA and ICR Rates
- Uses Common DCC Application Interface
- Made in America

The TellerScan® 215 is the next step up from our entry level CX30 remote deposit capture scanner. It leverages our TellerScan TS230 scanner family's proven technology while meeting the needs of the small business. Designed expressly for small volume applications, DCC's TS215 semi-automatic, single-feed scanner creates the highest quality images for both sides of a check in just about one second. Utilizing the "slide-in" feeder an operator can scan 30 checks per minute.

ERGONOMIC DESIGN

The TS215's quiet operation does not distract from customer service activities. Using just 5" x 8.5" of desktop or counter space, it fits neatly into any environment. A short U shaped transport path, with separate front and rear image cameras, provides smooth operation and automatically stacks the checks in the output hopper. The jam resistant slide-in feeder is ergonomically designed to ensure fast and easy operation. The transport handles all checks including 'thick' postcard style checks.

HIGH QUALITY IMAGES

The two, tricolor, CIS imaging cameras generate high quality images at full transport speed. As each check is scanned, it is analyzed before adaptive thresholding into black and white using proprietary software technology to sharpen the edges of characters. This provides a clear, easy to read image that supports Check 21 Image Quality and Usability (IQA & U) standards. Combined with an anti-skew

transport, this gives superior CAR/LAR (Courtesy and Legal Amount Recognition), OCR/ICR recognition of machine print, signatures and name / address information.

BEST READ MICR

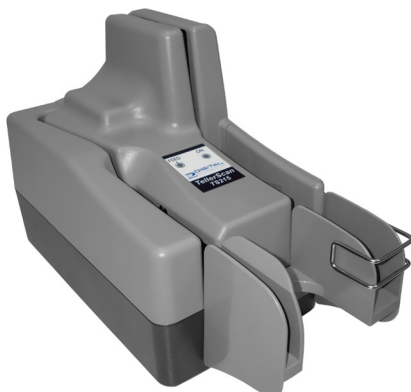
The TS215's proven MICR read electronics combined with our API's Best Read™ MICR technology set the bar for MICR read rates. The scanner's MICR reader captures and passes the codeline information to the API where the MICR characters are decoded through three proprietary algorithms. The Best Read™ MICR is compared to an OCR read of the MICR data based upon confidence levels, to deliver the highest MICR accuracy read rate for countertop scanners in the industry.

DCC'S PROVEN API

Further enhancing the functions of the TS215 scanner is our feature rich Application Interface (API).

Popular API features include:

- Virtual Endorsement
- Best Read™ MICR with OCR recognition
- Best Read™ Image with adaptive thresholding
- Remote Monitoring
- Special Document Thresholding for hard to read checks
- Special Document Thresholding for hard to read checks based upon ABA and / or account number
- Automatic image rotation



THE SECURE CHOICE™

TELLERSCAN® TS215

Quiet and Reliable Remote Deposit Check Scanner

SPECIFICATIONS

Unit Size:

Height: 6.60" (17.76 cm)
Depth 5.10" (12.95 cm)
Length: 8.60" (21.84 cm) (Tray adds 2.5")
Weight 4.20 lbs. (1.90 kg)

Paper Size: (Up to UNI A6)

Document Height: 2.12" - 4.13" (54 - 105 mm)
Document Length: 3.19" - 8.98" (81 - 228 mm)

Document Weight:

16 - 28 lb. bond (60 - 105 gsm)

Document Thickness:

0.0032" - 0.0058" (0.081 - 0.147 mm)

Printer: Programmable, single line inkjet printer with user replaceable cartridge

In-Line MICR Recognition: Bi-Directional (Magnetic Ink Character Recognition) for E13B (North America) and CMC7 (Europe)
Optical Character Recognition to enhance MICR Read, further enhanced using DCC's Best Read™ API function

Transport Speed: 19.69 inches per second (50 cm)

Throughput: Manual single document feed up to 30 Documents Per Minute (DPM)

Typical Scan Speed: Approximately 1 second (6 inch document)

Standard Interface: Standard USB 2.0

Supported Compression:

JPEG (24 bit color, 8 bit Grayscale)
BMP (24 bit color, 4 or 8 bit Grayscale)
TIFF Group 4 B/W

Image Resolution Optical:

200 x 200 dpi - 8 bit Grayscale
200 x 200 dpi - 24 bit Color

Image Resolution by Software Scaling:

100 x 100 (Scan at 200 dpi and scaling down to 100)

Scanning Method: Concurrent Two-Sided Duplex (2 Scan Modules)

Scan Module: Contact Image Sensor (CIS)

Resolution: 200 dpi (850 Pixel Linear Array)

Light Source: Tri-Color LEDs

SUPPORTED OPERATING SYSTEMS

Supported Operating Systems:

Windows® 2000, Windows® XP, Windows Vista® (32 / 64 bit)
Ubuntu® 7.05, Red Hat AS - Version 5, OpenSuse

ENVIRONMENTAL / RELIABILITY / ELECTRICAL FEATURES

Electrical: Power consumption: 45 Watts

Input Voltage: 100 to 240 VAC, 50/60 Hz

Separate Standard Power Supply: Auto sensing for voltage

Product Life & Duty Cycle: Designed for a useful life of over 1,000,000 items

Mean Time To Repair (MTTR): 15 minutes

Environmental:

Operating Temperature: 60° - 90° F (15° - 32° C)

Operating Humidity: 35 - 85% non-condensing

Certifications:

Safety: UL, CE

FCC: Class B (Industrial, Business or Home)

RoHS Compliant



THE SECURE CHOICE™

466 Central Ave., Suite 31 • Northfield, IL 60093 • Tel: 847.446.2285 • Fax: 847.441.5507 • www.digitalcheck.com