

Zebra® 160S

THERMAL TRANSFER DEMAND PRINTER

Introducing the 160S

The Zebra 160S™ is an affordable all-metal, industrial printer. With the ability to print bar code labels up to 6.3 inches (160mm) wide, this reliable printer is a perfect choice for printing compliance labels.

Performance

Enhanced electronics and 32-bit microprocessing power enable the 160S to rapidly format labels and achieve a constant print speed of 6 inches per second. Zebra's E3® print element control technology optimizes print quality to ensure highly readable bar codes are printed on every label.

Flexibility

Optional features make it easy to configure the 160S to your specific needs. If you want to print labels in high volumes and in batches, choose an optional internal rewind feature to rewind a full 8 inch (203mm) roll of labels within the printer. For applications requiring immediate label usage, an optional peel-off feature is available. Combined with Zebra's renowned quality construction and reliability, the 160S is not only a flexible solution, but it's also tough enough to withstand harsh working environments.

Compatibility

The 160S is compatible with other Zebra® printers due to ZPL II®, Zebra's powerful, easy-to-use programming language. And with serial or parallel ports, or an optional Ethernet network adapter, the 160S will easily connect to your host system environment.

For more information

For additional details on all Zebra printers, supplies, software and accessories, call your Zebra representative or visit our website at: <http://www.zebra.com>.



- **Benefit from high reliability and durability with all-metal construction at an affordable price**
- **Meet compliance labeling demands easily and economically**
- **Maintain label registration on black mark or die-cut media using dual media sensors**

Industry/application overview

- **Compliance labeling**
- **Multiple across labels**



When it's on the line.™

160S Specifications*

STANDARD FEATURES

PRINT SPECIFICATIONS

- **Print Method/s** Thermal transfer or direct thermal
- **Max. Width** 6.3" (160mm)
- **Max. Length** 25" (635mm)
 - Standard Memory 9.5" (241mm)
 - Optional Memory 25" (635mm)
- **Resolution** 203 dpi (8 dots/mm)
- **Max. Speed** 6.0" (152mm)

PHYSICAL CHARACTERISTICS

- **Depth** 18.9" (480mm)
- **Width** 13.1" (332.7mm)
- **Construction** 12-gauge steel frame
- **Height** 15.4" (391mm)
- **Weight** 55 lbs. (24.9kg)

RELATED FEATURES

- Transmissive media sensor
- Reflective media sensor
- 32-bit microprocessor

ZPLII® PROGRAMMING LANGUAGE

- Universal language for Zebra printers. Makes label formatting and modification simple. Allows compatibility with other Zebra printers.

OPERATING CHARACTERISTICS

ENVIRONMENT

- **Operating Temp.** 41°F (5°C) to 104°F (40°C)
- **Storage Temp.** -40°F (-40°C) to 140°F (60°C)
- **Operating Humidity** 20-85% non-condensing
- **Storage Humidity** 5-85% non-condensing

ELECTRICAL

- Selectable 110 or 230 VAC +/-15%; 48-62Hz; 5A@ 115V, 3A@ 230V

COMMUNICATION INTERFACE CAPABILITIES

- Centronics® parallel or RS-232/422 serial port, 110-19,200 configurable BAUD rate, parity, data bits, XON-OFF/DTR protocol

AGENCY APPROVALS

- CISPR 22 (Class B); UL 1950; CSA 950; IEC 950; 801-2, 3 and -4 standards; FCC (Class A), Canadian Doc. (Class A); carries the CE mark of compliance

MEDIA CHARACTERISTICS

MEDIA SPECIFICATIONS

- **Width** 2.0" (50.8mm) to 7.2" (182.8mm)
- **Max. Roll Diameter** 8.0" (203mm) O.D.
- **Thickness** 0.003" (0.076mm) to 0.012" (0.304mm)
- **Max. Length**
 - Standard Memory 9.5" (241mm)
 - Optional Memory 25" (635mm)
- **Core Size** 3.0" (76mm) I.D.

RIBBON SPECIFICATIONS

Ribbon is recommended to be at least as wide as media.

- **Width** 2.0" (50.8mm) to 6.89" (175mm)
- **Roll Diameter** 3.2" (81.3mm) O.D.
- **Core Size** 1.0" (25.4mm) I.D.

FONTS / GRAPHICS / SYMBOLOGIES

CHARACTER FONTS/SETS

- **CHR Fonts** Standard: 7 bitmapped, 1 scalable (CG Triumvirate™ Bold Condensed)
- **CHR Sets** IBM® Code Page 850 multilingual character set

GRAPHIC FEATURES

- Supports user-defined fonts and graphics—including custom logos

BAR CODE SYMBOLOGIES

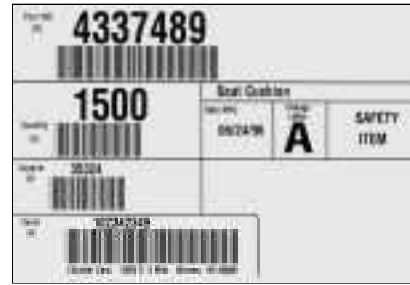
- **One-Dimensional**
Code 11, Code 39, Code 93, Code 128, ISBT 128, Codabar, UPC-A, UPC-E, EAN-8, EAN-13, Plessey, EAN and UPC with 2 or 5 digit supplements, Interleaved 2 of 5, Standard 2 of 5, Industrial 2 of 5, LOGMARS, MSI, Postnet
- **Two-Dimensional**
CODABLOCK, MaxiCode, Code 49, PDF-417, Datamatrix, QR Code

OPTIONAL FEATURES

OPTIONS/ACCESSORIES

- **Label peel/liner rewind** (for print-and-apply)
- **Rewind** (full label roll is rewound internally)
- **Fan-fold bin** (internal mounting)
- **ZebraNet™ MPS** (provides Ethernet connectivity)
- **Scalable and smooth bitmapped fonts**
- **BAR-ONE software** (Zebra's Windows™-based label design and printing software)

AIAG Label



This AIAG label is one example of the many application labels the 160S can print.



Zebra Technologies Corporation
International Headquarters Office
333 Corporate Woods Parkway
Vernon Hills, IL60061-3109 U.S.A.
Phone: +1 (847) 634-6700 or (800) 423-0422
Fax: +1 (847) 913-8766

Zebra Technologies Europe Limited
European Headquarters Office
Zebra House
The Valley Centre, Gordon Road
High Wycombe
Buckinghamshire HP13 6EQ, UK
Phone: +44 (0) 1494 472872
Fax: +44 (0) 1494 450103

Zebra Technologies Europe GmbH
Regional Sales Office—Germany
Birkenwaldstr. 38
63179 Obertshausen
Germany
Phone: +49 (0) 6104 959135
Fax: +49 (0) 6104 959111

Zebra Technologies Corporation
Regional Sales Office—Asia/Pacific
301 Geylang Road #04-05
Geylang Centre, Singapore 389344
Phone: +65-842-0322
Fax: +65-842-0366

Zebra Technologies Corporation
Regional Sales Office—Latin America
4300 N. University Dr., Suite C-200
Ft. Lauderdale, FL33351 U.S.A.
Phone: +1 (954) 747-5090
Fax: +1 (954) 747-3655

Zebra Technologies Corporation
Regional Sales Office—Japan
Level 11, Park West Building
6-12-1 Nishi-Shinjuku
Tokyo 160-0023, Japan
Phone: +81 5325 3145
Fax: +81 5325 3146

*Specifications listed are for base model printers with standard features only unless otherwise noted. Ask your Zebra representative for detailed specs for the printer recommended for your application.

www.zebra.com

Specifications subject to change without notice. All product and brand names are trademarks of their respective companies. All rights reserved. Contact your Zebra sales representative for specific information.
©1997 Zebra Technologies Corporation #11748L Rev. 1 (8/98) Printed in U.S.A.



An ISO 9001 registered company